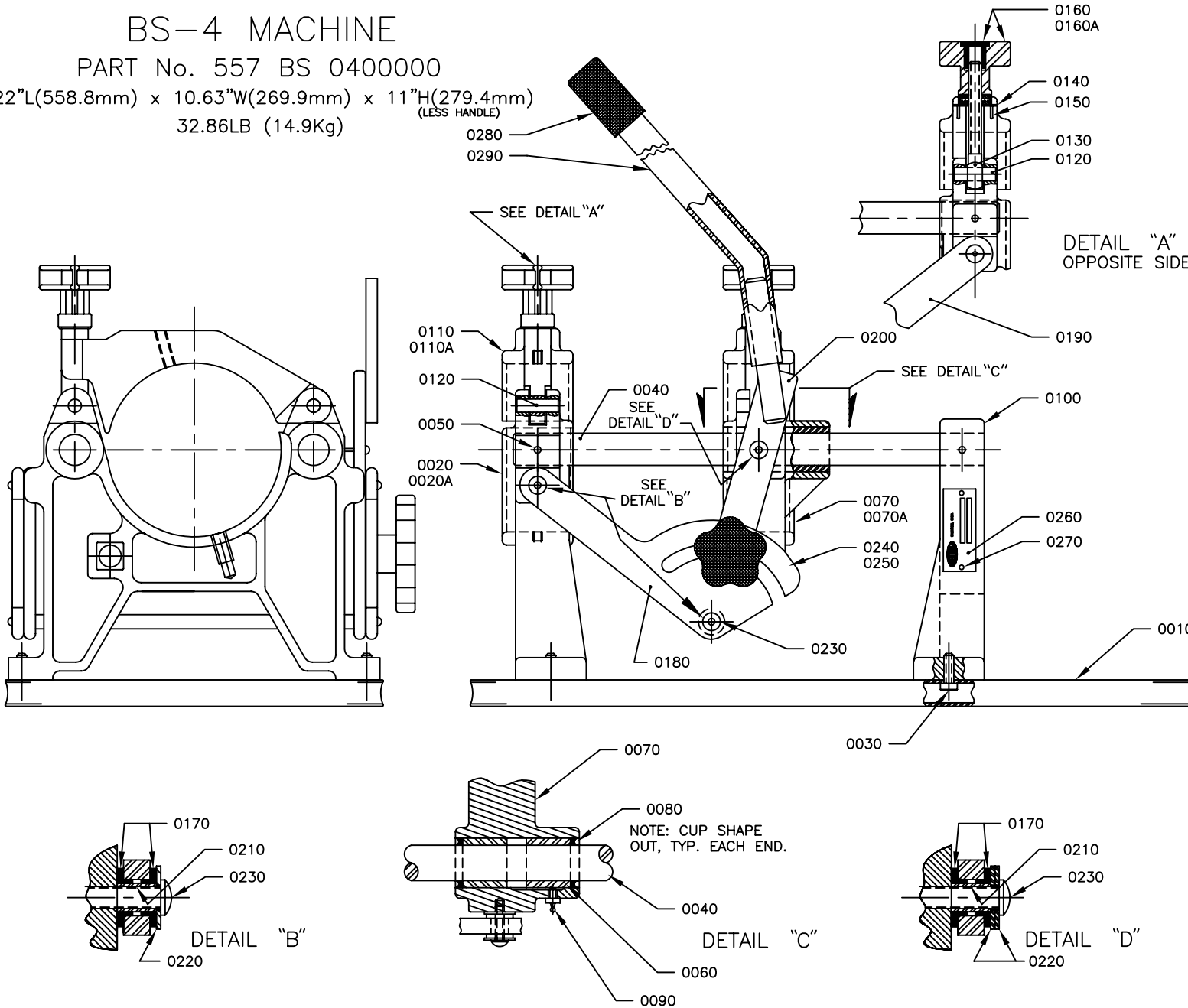




**CENTRAL PLASTICS COMPANY**  
 1901 WEST INDEPENDENCE  
 P.O. BOX 3129  
 SHAWNEE, OKLAHOMA 74801 U.S.A.  
 PHONE: (405) 273-6302  
 WATTS: 1-800-654-3872  
 FACSIMILE: (405) 273-5993  
 FACSIMILE (U.S.A. & CANADA): 1-800-733-5993

**BS-4 MACHINE**  
 PART No. 557 BS 0400000  
 22"L(558.8mm) x 10.63"W(269.9mm) x 11"H(279.4mm)  
 32.86LB (14.9Kg) (LESS HANDLE)



SEQ No	COMPONENT ITEM & SUB-COM.NOs.	DESCRIPTION	UNIT OF MEASURE
0010	557BS2400015	BASE FRAME	1.000 EA.
0020	557BS4400001	FIXED PIPE CLAMP	1.000 EA.
(A)	900HX0420060	HELICOIL 1/4-20 X 3/4" LONG	(1) EACH
0030	900SC0518050	SOCKET HEAD CAP SCREW 5/16-18 X 5/8" LONG	4.000 EA.
0040	557BS2400010	SLIDE RAIL	2.000 EA.
0050	900PNO031081	SPRING PIN 3/16" DIA. X 1 1/2" LONG	4.000 EA.
0060	557BS1400009	BEARING 7/8" DIA. X 1 1/8" LONG	4.000 EA.
0070	557BS3400003	SLIDING PIPE CLAMP	1.000 EA.
(A)	900HX0420060	HELICOIL 1/4-20 X 3/4" LONG	(1) EACH
0080	900MM0030003	SHAFT SEAL	4.000 EA.
0090	9000271	GREASE ZERK 1/4-28 STRAIGHT	2.000 EA.
0100	557BS3400002	END FRAME	1.000 EA.
0110	557BS3400004	TOP CLAMP	2.000 EA.
(A)	900HX0420060	HELICOIL 1/4-20 X 3/4" LONG (1) EACH PER TOP CLAMP	
0120	557BS1400005	HINGE PIN 3/8" DIA. X 1 1/4" LONG	4.000 EA.
0130	555SB0210077	EYE BOLT 3/8-16 X 3" LONG	2.000 EA.
0140	9030028	WEAR PAD	2.000 EA.
0150	900FH0420042	FLAT HEAD SCREW 1/4-20 X 1/2" LONG	4.000 EA.
0160	5570074	TOP CLAMP KNOB ASSEMBLY	2.000 EA.
(A)	9000268	PIPE CAP 1/4" NIAGARA EZ-4 (1) ASSY PER TOP CLAMP KNOB	
0170	900MM1040004	SHOULDER WASHER BUSHING	12.000 EA.
0180	557BS1400021	LOCKING LINK	1.000 EA.
0190	557BS1400024	LINK	1.000 EA.
0200	557BS3400017	CROSS LINK ASSEMBLY	1.000 EA.
0210	557BS1400026	STUD SLEEVE	6.000 EA.
0220	900WA0050100	FLAT WASHER 5/16" SAE	8.000 EA.
0230	9000465	BUTTON HEAD CAP SCREW-HEX SOCKET 5/16-18 X 1 1/4" LONG	6.000 EA.
0240	900WA0060100	FLAT WASHER 3/8" USS	2.000 EA.
0250	555SB0210053	LINKAGE LOCKING KNOB	1.000 EA.
0260	557BS0400020	I.D. TAG BS-4 MACHINE	1.000 EA.
0270	900DS1120080	DRIVE SCREW #4 X 1/4" LONG	2.000 EA.
0280	555FE0210014	HANDLE GRIP	1.000 EA.
0290	555SB1210056	OPERATING HANDLE	1.000 EA.
0320	900BX1000042	MACHINE BOX	1.000 EA.
0330	557-2-01	PARTS LIST	1.000 EA.

NOTE: USE ONLY MYSTIC J-6 GREASE - 1/2 PUMP w/ GREASE GUN  
 DO NOT OVERPACK

# MODEL-2 ELECTRIC

PROCESS DRAWING No. 556-2-07 B REV-A

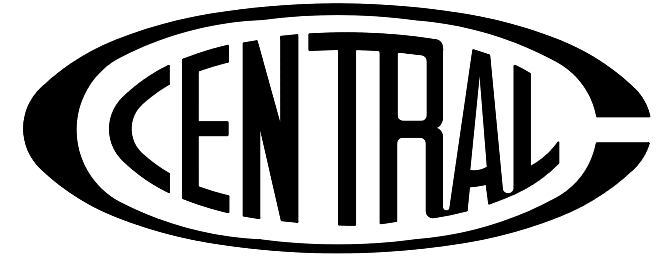
## HEAT FUSION TOOL

PART No.5560021

FOR

BUTT, SOCKET, & SERVICE-

SIDE WALL FUSION



CENTRAL PLASTICS COMPANY

1901 WEST INDEPENDENCE

P.O. BOX 3129

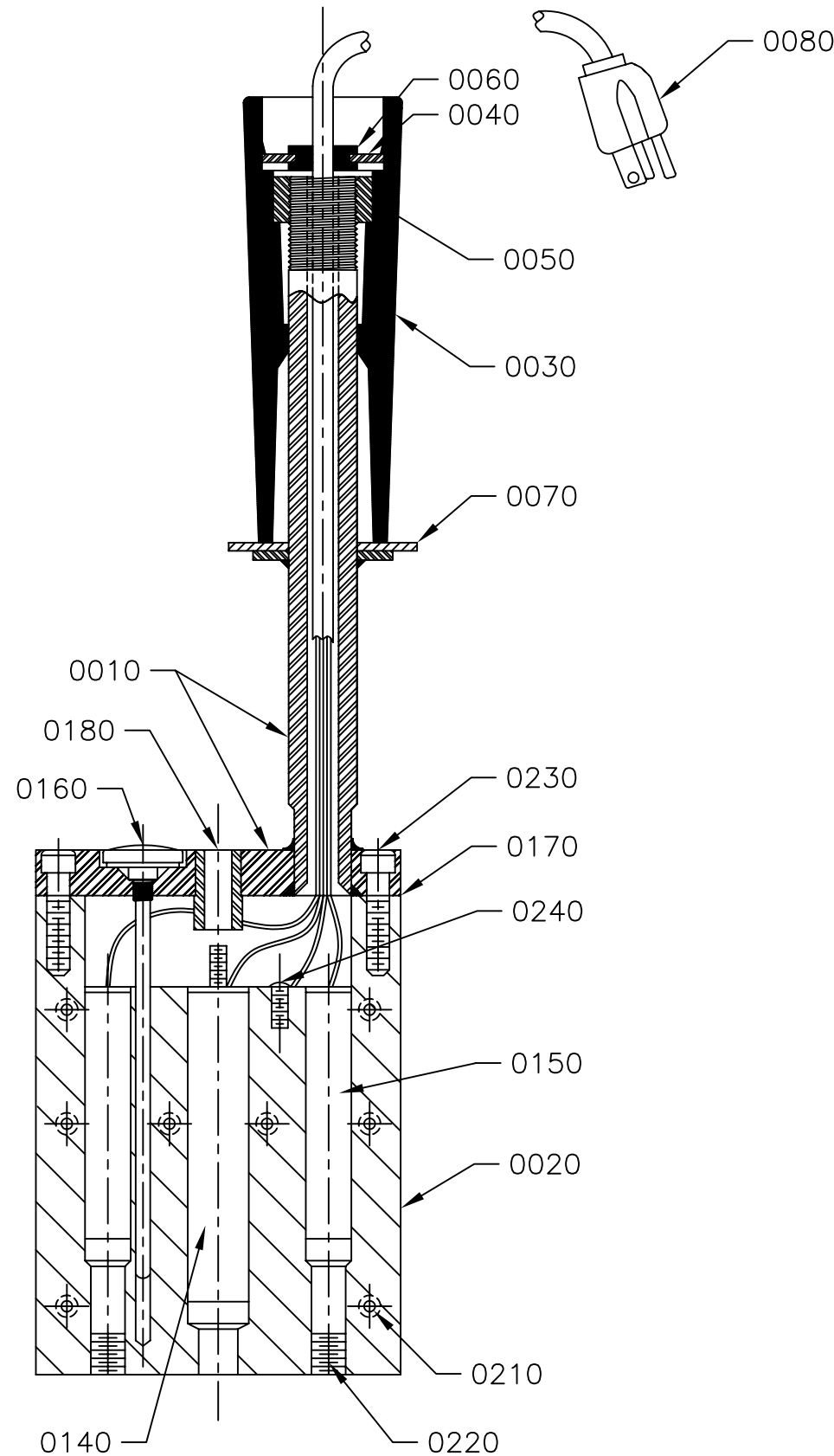
SHAWNEE, OKLAHOMA 74801 U.S.A.

PHONE: (405) 273-6302

WATTS: 1-800-654-3872

FACSIMILE: (405) 273-5993

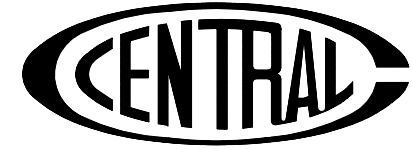
FACSIMILE (U.S.A. & CANADA): 1-800-733-5993



SEQ NO.	COMPONENT ITEM NO.	DESCRIPTION	UNIT OF MEASURE
0010	5560041	HEATER HANDLE WELD ASSEMBLY	1.000 EA.
0020	556EB3000044	HEATER BLOCK	1.000 EA.
0030	5560020	HEATER HANDLE	1.000 EA.
0040	5560027	CORD RETAINER	1.000 EA.
0050	9000469	HEX NUT 3/4 [19.0] - 16 UNF PLATED	1.000 EA.
0060	9000471	RUBBER GROMMET	1.000 EA.
0070	5560032	THERMAL WASHER	1.000 EA.
0080	555TE0210027	CORD W/3 POLE MOLDED PLUG x 8 FT. [2.4]	1.000 EA.
0090	556EB0000036	SPADE FORK 14-16 GA NONINS	1.000 EA.
0100	556EB0000037	BUTT CONNECTOR 14-16 GA NONINS	2.000 EA.
0110	556EB0000038	BUTT CONNECTOR 10-12 GA NONINS	1.000 EA.
0120	556EB0000039	TUBE HIGH TEMP CLASS C .186 I.D.[4.7]	.200 FT.
0130	556EB0000040	TUBE HIGH TEMP CLASS C #7	.400 FT.
0140	556EB0000047	THERMOSWITCH MDL 2 HEATER .625 [15.88] DIA. X 3 3/4 [95.2] LONG	1.000 EA.
0150	5560033	HEATER CARTRIDGE 120V-400W 1/2 [12.7] DIA. x 3.00 [76.2] LONG	2.000 EA.
0160	556EB0400018	THERMOMETER 3/16 [4.8] DIA. x 4-1/2 [114.3] LONG x 1.00 [25.4] DIAL	1.000 EA.
0170	556EB1000049	BASE GASKET	1.000 EA.
0180	559EB1400009	PROTECTIVE SLEEVE	1.000 EA.
0190	5560035	I.D. TAG MODEL 2 HEATER	1.000 EA.
0210	900HX0420040	HELICOIL 1/4-20 UNC x 1/2 [12.7] LONG.	16.000 EA.
0220	9000085	HELICOIL 5/16-18 UNC x 5/16 [7.9] LONG	2.000 EA.
0230	900SC0420052	SOCKET HEAD CAP SCREW 1/4-20 UNC x 5/8 [15.9] LONG STAINLESS STEEL	2.000 EA.
0240	9000090	PHILLIPS PANHEAD SCREW #10-24 UNC x 3/8 [9.5] LONG	1.000 EA.
0250	900MM0010001	BLIND RIVET 1/8 [3.2] DIA x 1/8 [3.2] RANGE	2.000 EA.
0260	900BX1000070	BOX 16 x 8 x 2 3/4	1.000 EA.

**MANUAL TRIMMER**  
**MODEL No. TM-4A**  
**PART No.5590000**

PROCESS DRAWING No. 559-2-01



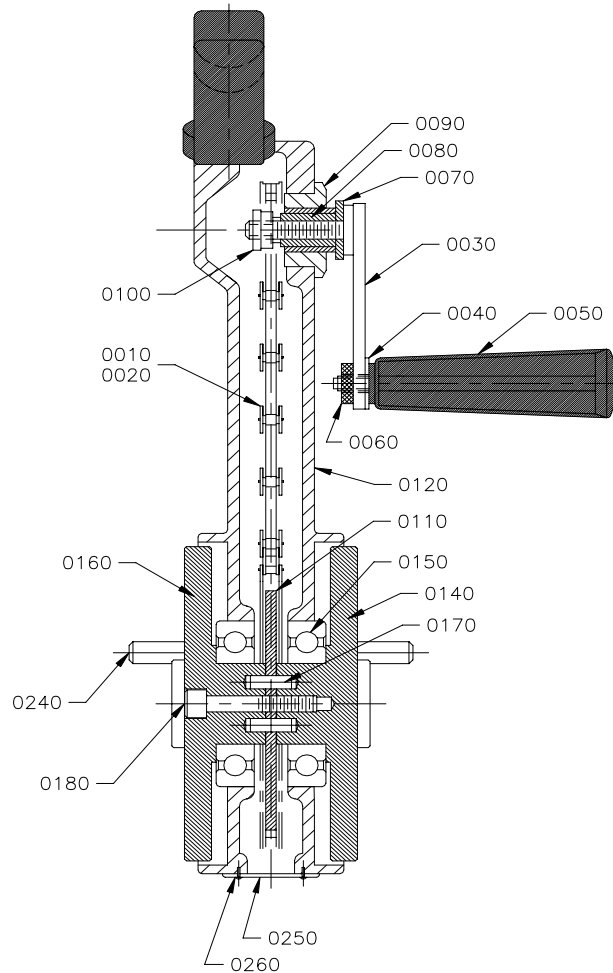
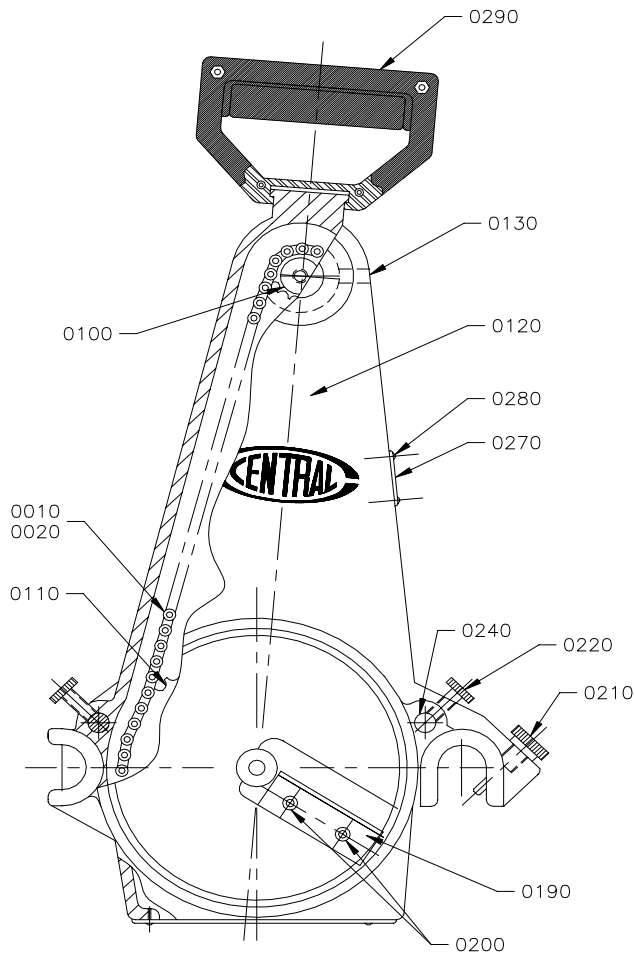
**CENTRAL PLASTICS COMPANY**

1901 WEST INDEPENDENCE  
P.O. BOX 3129

**SHAWNEE, OKLAHOMA 74801 U.S.A.**

PHONE: (405) 273-6302  
WATTS: 1-800-654-3872  
FACSIMILE: (405) 273-5993

FACSIMILE (U.S.A. & CANADA): 1-800-733-5993



SEQ NO.	COMPONENT ITEM NUMBER	DESCRIPTION	UNIT OF MEASURE
0010	900CH0060001	ROLLER CHAIN 3/8 PITCH 29 5/8" LONG	2.469 FT.
0020	555TRO210067	MASTER LINK 3/8 PITCH	1.000 EA.
0030	5590007	CRANK BAR ASSEMBLY	1.000 EA.
0040	900WA0070101	WASHER FLAT 7/16 SAE BLACK	1.000 EA.
0050	5590008	CRANK HANDLE	1.000 EA.
0060	5590006	BEARING NUT	1.000 EA.
0070	900WA080100	WASHER FLAT 1/2 USS PLATED	1.000 EA.
0080	555TM1210018	CRANK SPINDLE SLEEVE	1.000 EA.
0090	5590003	BEARING HOUSING ASSY-MAN. TRIM	1.000 EA.
0100	555TR1210019	DRIVE SPROCKET 3/8 PITCH 10 TOOTH	1.000 EA.
0110	555TR1210011	DRIVEN SPROCKET 3/8 PITCH 32 TOOTH	1.000 EA.
0120	5590002	TRIMMER HOUSING	1.000 EA.
0130	9000089	SET SCREW 1/4-20 x 3/8" LONG	1.000 EA.
0140	5590009	FRONT TRIMMER DISC	1.000 EA.
0150	9000273	BEARING BALL SKF #477507 OR EQUIVALENT	2.000 EA.
0160	5590010	REAR TRIMMER DISC	1.000 EA.
0170	900PN0040120	DOWEL PIN 1/4 x 3/4" LONG	2.000 EA.
0180	9000274	SOCKET HEAD CAP SCREW 5/16-18 x 1 1/2" LONG	1.000 EA.
0190	555TR1210004	TRIMMER BLADE/STAINLESS STEEL	2.000 EA.
0200	10001114	FLAT HEAD SOCKET CAP SCREW #10-24 x 3/8" LONG / SS	4.000 EA.
0210	559TE1400022	RAIL LATCH ASSY.	1.000 EA.
0220	900SC0420050	SOCKET HEAD CAP SCREW 1/4-20 x 5/8" LONG	2.000 EA.
0240	559TE1400013	STOP ROD	2.000 EA.
0250	559TE1400006	COVER PLATE	1.000 EA.
0260	900MM0010024	PAN HEAD SCREW #5-40 x 1/4" LONG	6.000 EA.
0270	5590004	I.D. TAG - MODEL TM-4A	1.000 EA.
0280	900DS1120080	DRIVE SCREW #4 x 1/4" LONG	2.000 EA.
0290	5570031	HANDLE ASSEMBLY	1.000 EA.
0300	900BX1000023	BOX	1.000 EA.